

 **SALUS**
CONTROLS PLC

MP200

Domestic Circulating Pump



*The Manual for Operating
and Maintenance*



 **SALUS**
CONTROLS PLC

MP200

Domestic Circulating Pump



**The Manual for Operating
and Maintenance**

Content

- 1. *Conditions of operation*▶
- 2. *Points for installation*▶
- 3. *Maintenance and repair*▶

*GPD series Single-phase pipeline
screened electric pump*





MP200

Domestic Circulating Pump

• Common troubles diagnostic list.

Common troubles	Causes of troubles	The measures of eliminating troubles
Pump can't be started up	Power supply problem.	Check the fuse or the connection of electricity that possibly loose.
	Electric capacitor is damaged.	Exchange a new electric capacitor.
	Bearing blocked the pump's running.	Make it run in a high speed in short time or loosen the rator with a screwdriver at the end of shaft.
	There is impurity in pump.	Disconnect pump to clean.
There is noise in the system.	The pump speed is set too high.	Adapt to a lower speed.
	There is gas in the pump.	Release the gas out.
There is noise in the pump.	There is gas in the pump.	Release the gas out.
	The inlet hydraulic pressure is too low.	Increase hydraulic pressure of inlet or check gas volume in the enlarged slot.



The Manual for Operating and Maintenance



MP200 Domestic Circulating Pump



SALUS

CONTROLS PLC

MP200

Domestic Circulating Pump

1. Conditions of operation

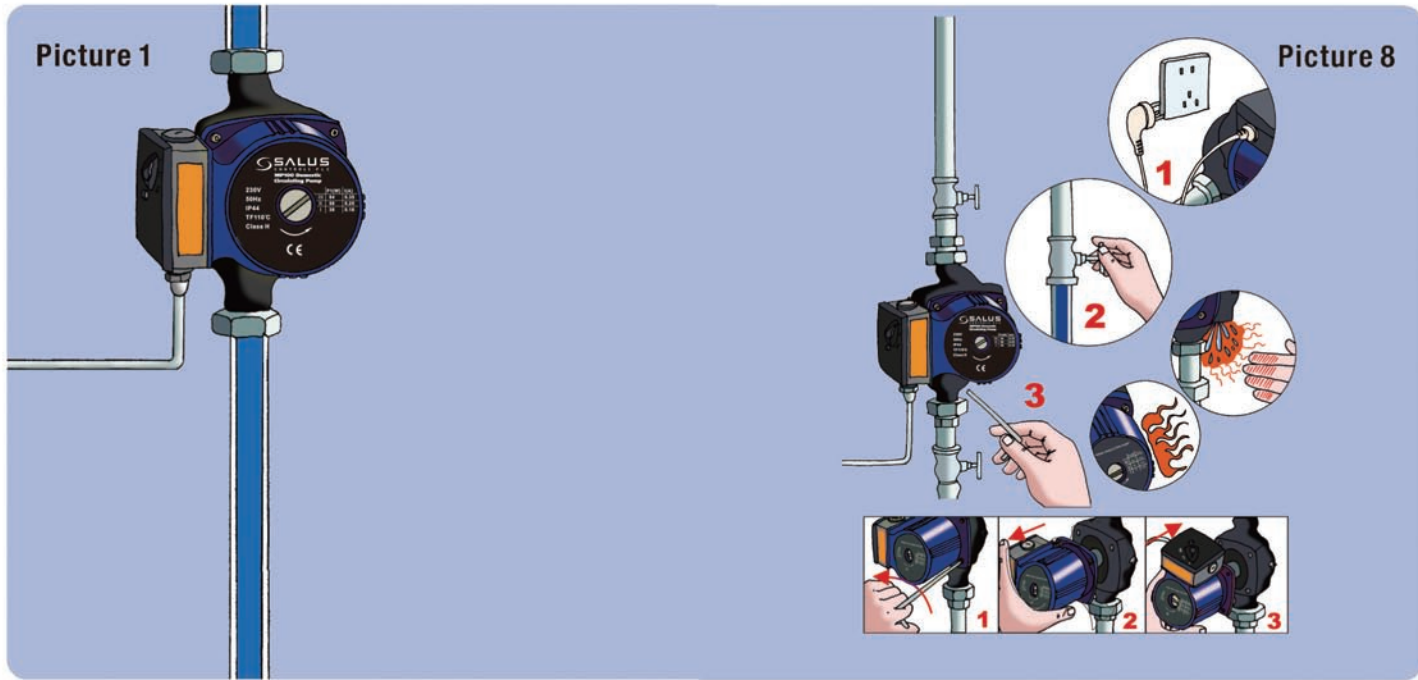
- Bearing of pump is lubricated with water, running without water can't exceed 10 seconds. Shown as Picture 1.



The Manual for Operating and Maintenance

3. Maintenance and repair

- Attention: If damaged. Wiring must be replaced by competent person in accordance with BS7671(The IEE regulations) or other national regulations and codes of good practice.



Picture 1


Picture 8

SALUS

CONTROLS PLC

MP200

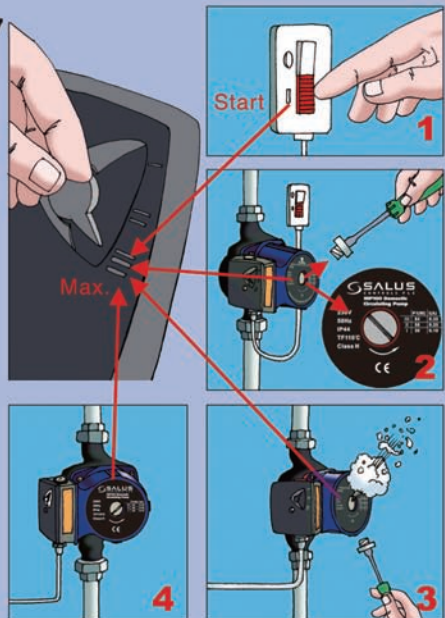
Domestic Circulating Pump

   **The Manual for Operating and Maintenance**

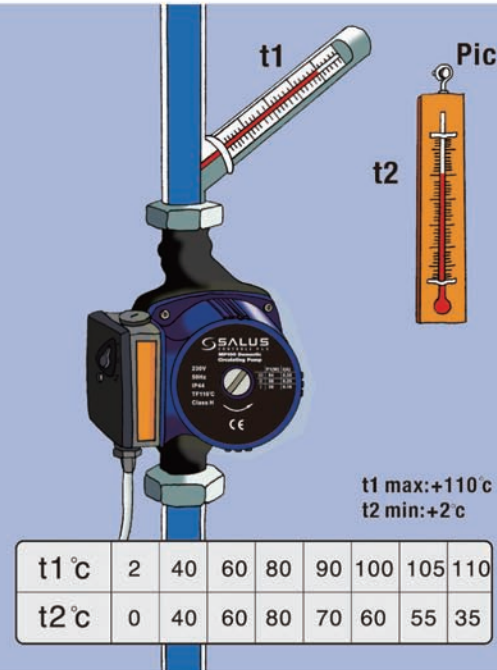
After installed, pump must be deflated before working for the first time. Shown as Picture 7.

The temperature of environment must be lower than that of media. Shown as Picture 2

Picture 7



Picture 2



t1 °C	2	40	60	80	90	100	105	110
t2 °C	0	40	60	80	70	60	55	35

t1 max: +110°c
t2 min: +2°c

SALUS

CONTROLS PLC

MP200

Domestic Circulating Pump

2. Points for installation

- Pump must be horizontally installed. Shown as Picture 3.
- Pump must be installed according to following procedures shown as Picture 4.



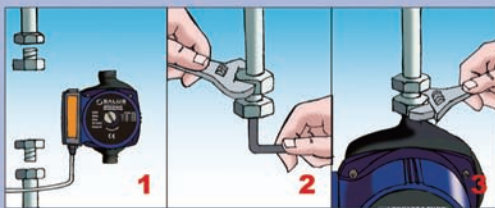
 **The Manual for Operating and Maintenance**

- Beware to use electricity, invite technician to install the pump according to electricity using regulations if necessary. Shown as Picture 5.
- Please read the warnings carefully before installation. Shown as Picture 6.

Picture 3

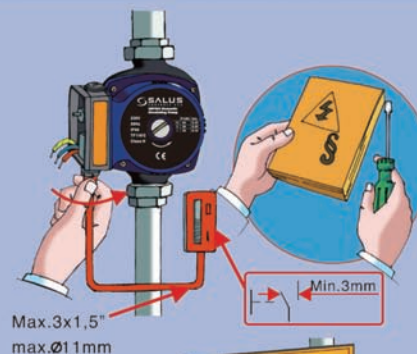


Picture 4

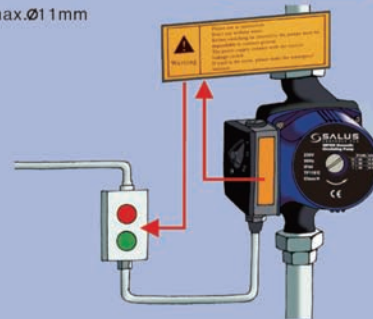


6

Picture 5



Picture 6



7